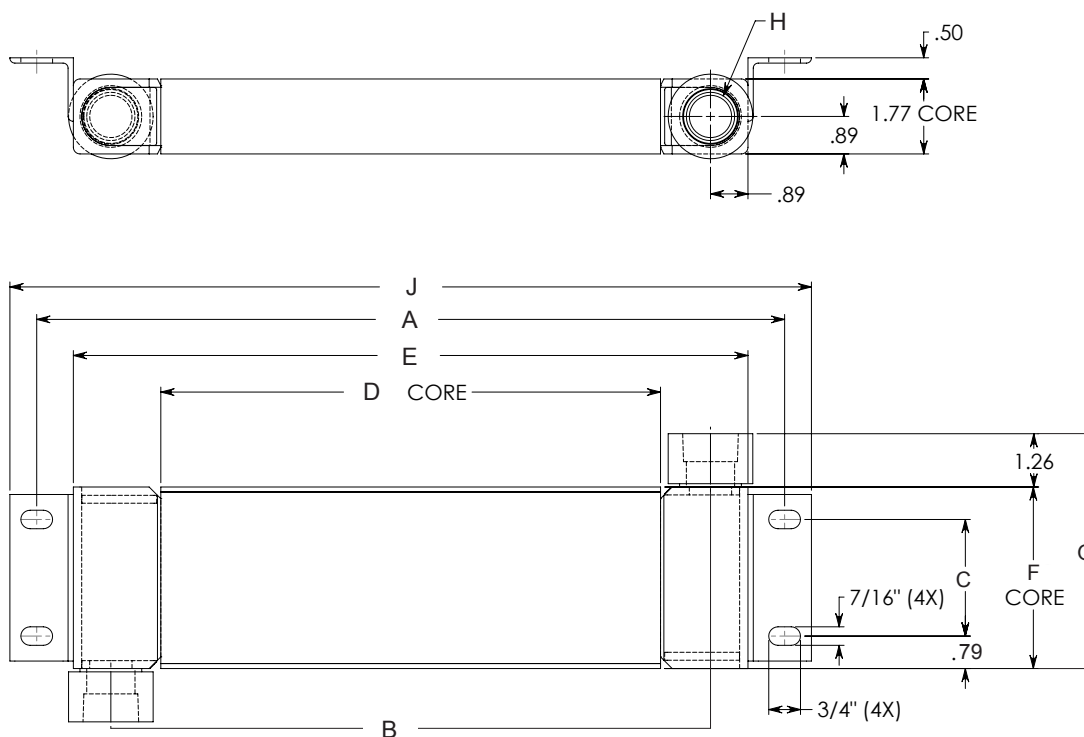


BELT GUARD AFTERCOOLERS



- Mount directly to compressor's belt guard, utilizing compressor pulley's air flow for cooling
- Compact aluminum bar and plate design provides maximum performance with low pressure drop
- Competitive pricing, deliveries from stock

PRODUCT INFORMATION



| MODEL NUMBER | MAX SCFM | MODEL RATING APPROACH TEMP |
|--------------|----------|---------------------------------------|
| C-1835BG | 35 | 5°F for 18 SCFM 15°F for 35 SCFM |
| C-3560BG | 60 | 10°F for 35 SCFM 25°F for 60 SCFM |
| C-70100BG | 100 | 13°F for 70 SCFM 25°F for 100 SCFM |

Sizing notes, ratings are based on the following:

Max pressure rating - 250 PSI
Max Operating Temp - 400° F
Material - Aluminum

250° F inlet (Air)
100-PSIG Operating Pressure
100° F Ambient Air
500 FPM Air Velocity
Max Pressure Drop is 3 PSI or less

| MODEL NUMBER | A | B | C | D | E | F | G | H NTP | J |
|--------------|-------|-------|------|-------|-------|------|------|-------|-------|
| C-1835BG | 17.68 | 14.17 | 2.76 | 11.81 | 15.94 | 4.29 | 5.55 | 1.00 | 18.94 |
| C-3560BG | 17.68 | 14.17 | 3.94 | 11.81 | 15.94 | 5.51 | 6.77 | 1.00 | 18.94 |
| C-70100BG | 19.65 | 16.14 | 6.3 | 13.78 | 17.91 | 7.91 | 9.17 | 1.00 | 20.91 |